



# SMS R1<sup>®</sup>

SIGN MAKING SYSTEM

## Multi-colour labels in any shape and quantity



Prints and Cuts labels  
in one fast process

Unmatched ribbon saving  
up to 90%

Network and USB  
connected

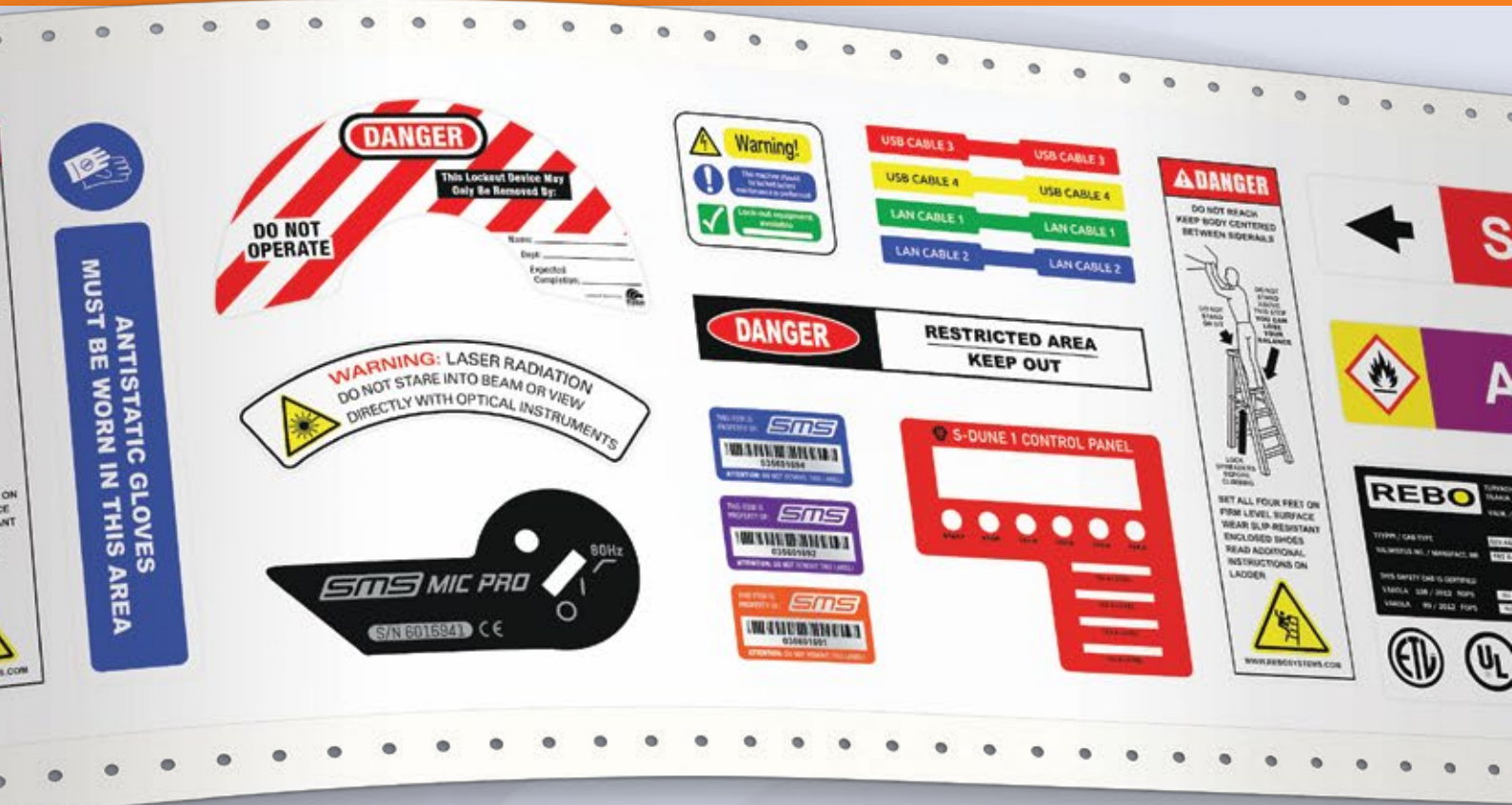
Health & Safety labels | Machine plates | Product ID labels  
Cable & Wire marking | Pipe marking | Warehouse labels  
Control panel labels | Maintenance & Inspection labels

### SMS-R1 - Print Multi-colour signs and labels straight from your desktop

The SMS-R1 is a high speed, easy to use sign and label printer that incorporates a wealth of time and money saving features. Capable of printing up to 14 different colours and cutting out any shape, the versatility of the SMS-R1 makes it a cost saving production tool and an on-demand solution. You can produce one, multiples of one or even multiples of varied sizes and coloured signs or labels in one fast process.

Our unique and independent driver also means you can use your own preferred software to create designs or you can use our recommended design software – it's your choice.





## WHAT'S GOOD ABOUT THE SMS-R1

### Auto-Feed™

The Auto-Feed™ technology is designed to let you load the tape rolls with ease. When you're loading the tape inside the SMS-R1 it will automatically detect it and will run it through to the starting position of your print job.

### Ribbon Saving technology

The SMS-R1 senses when the ribbon isn't required and will not feed in a print process, giving enhanced cost savings over other systems currently available.

### Dust-free design

Its closed design keeps the whole production contained within the unit to stop contamination of the material and the print head – preventing failed print outs and needless waste.

### Animated colour command touch screen

Gives clear user prompts using concise graphics – all from the SMS-R1 itself and not confined to the screen of the PC driving the system. Clear colour change prompts guarantee minimised wastage.

### Slide-in Cassettes

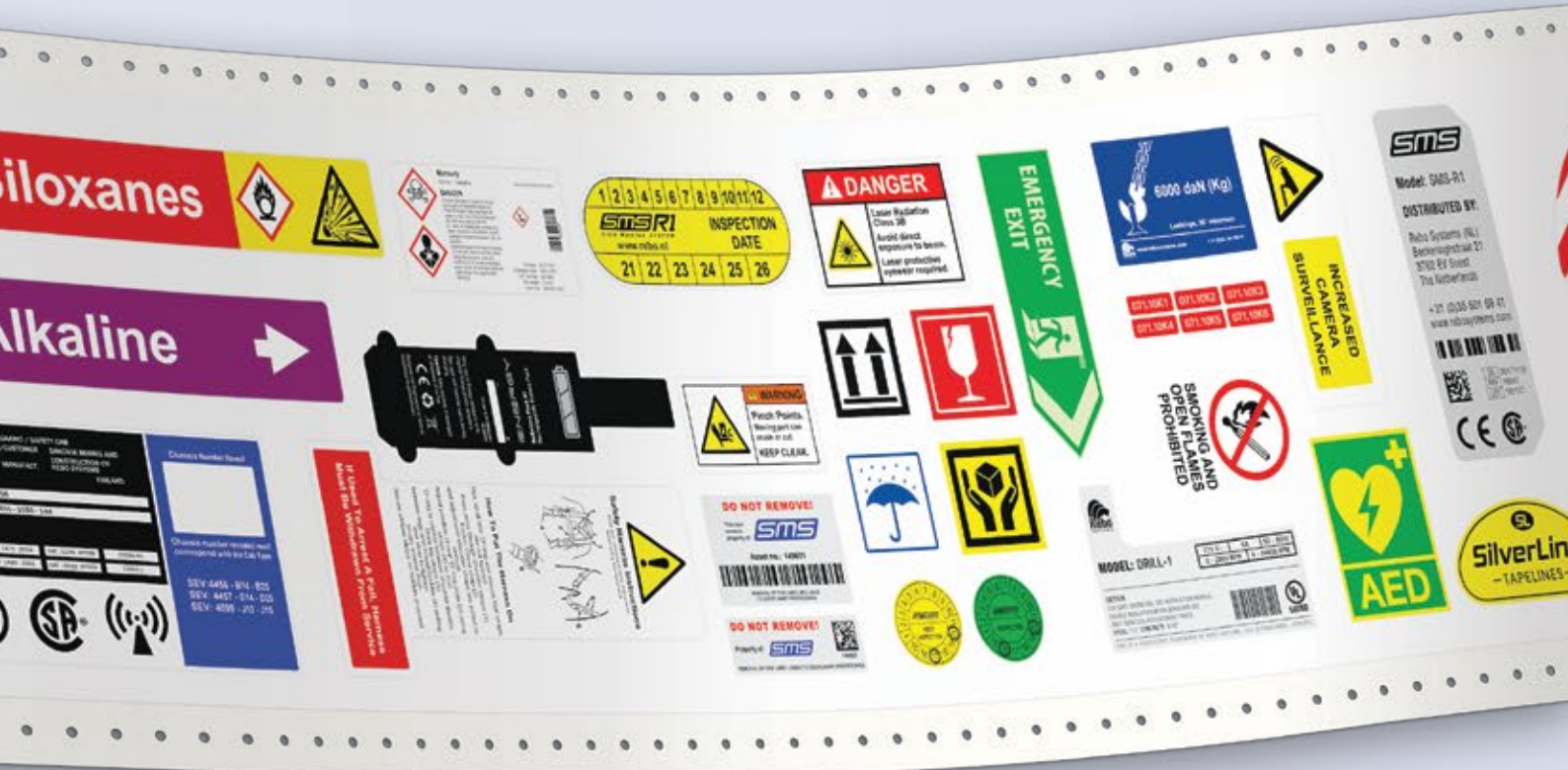
Ribbon cassettes slide conveniently into the side of the SMS-R1 – and are automatically ejected. No clumsy lids to open and close – no time consuming manual placement.

### Automatic Tape & Ribbon recognition

The SMS-R1 will automatically detect which colour tape and/or ribbon is being loaded and how much material there is left. The system will not start printing if any of the required materials are insufficient.

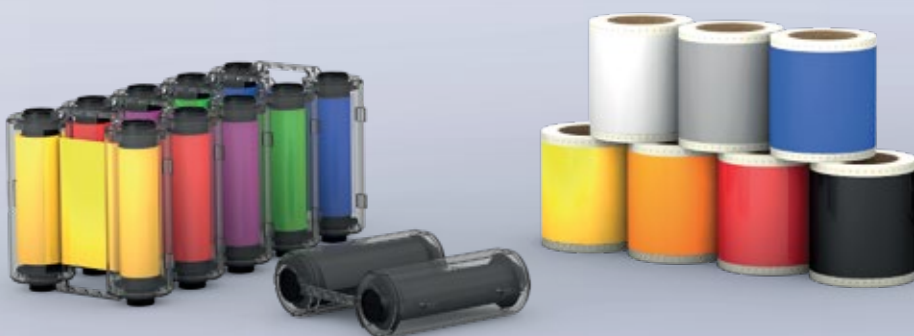
### Overlamine Function

The system will pause after printing, allowing a clear laminate to be placed over the labels, then it will continue to cut – delivering extra durability and protection.



**A MATERIAL AND COLOUR FOR EVERY CONDITION, CHALLENGE AND ENVIRONMENT**

- Industrial vinyl with up to 10 years outdoor durability
- Extra strength, high adhesive vinyl and polyester for difficult surfaces
- 15 types of Polyester in varied colours and grades for high temperature and low halide content
- Replaceable tapes, perfect for logistics and replacing magnetic labels
- Reflective materials
- Glow in the dark materials – for egress and emergency marking
- Hi Viz materials – for extra visibility
- Metal detectable materials – for the food and beverage industry
- Large range of print ribbon colours to meet all legislations and norms



For a **FREE sample pack** of our label materials contact us on [info@2signandsafe.com](mailto:info@2signandsafe.com) or call us on 03-541.04.8

## One system delivering endless solutions

The SMS-R1 is a unique sign and labelling resource, it will allow any industry to create essential signs and labels when wanted, in the quantity wanted and at the best cost. As a product with its unique cutting function, labels can be produced in a myriad range of special shapes so even low volume, bespoke labels are on-hand in minutes. Industries have wide ranges of label needs and the SMS-R1 can deliver everything from safety signs, cable and wire marking, maintenance labels, pipe identification, serial plates, component marking and 'part of product' labelling.

## A dependable system, delivered with top class software!



- Professional software with extensive print & design capabilities
- Design and edit texts, barcodes, lines, shapes and images
- Advanced functionality for multiple field linking
- Thousands of industrial symbols and icons in compliance with the latest regulations
- Advanced design tools like rich text, linestyles, group, textframes with automatic font size
- Connect data on your labels from databases and spread sheets (Excel, Access)
- Microsoft® certified software

### Printer specifications

Printing Method	Thermal Transfer
Resolution	300dpi
Print speed	Max. 50mm/s (2ips)
Cut speed	Max. 300mm/s (11.8")
Print Length	Max. 12 meter per job (472")
Print Width	Max. 103mm (4.05")
Cut Width	Max. 103mm (4.05")
Dimensions	L 415mm x W 245mm x H 430mm (L 16.3" x W 9.6" x H 19.9")
Weight	13kg (28.6lbs)
Sensors	Tape length / Tape colour / Ribbon length / Ribbon colour / Auto-feed
Operation Interface	1x On/Off button / 1x Full colour command touch screen
Connectivity	LAN, USB
Agency Listing	CE, EMC
Media Type	Continuous
Ribbon Type	Wax, Resin, Wax/Resin



2 Sign & Safe

Luithagen 9  
2030 Antwerpen

☎ +32 (0)3 - 541 04 84

@ info@2signandsafe.com

🛒 patricia@2signandsafe.com

🌐 www.2signandsafe.com